



# TRIKE/3 MOTORCYCLE GARAGE SHELTER 2100 X 3800 X 1900MM

MODEL NO: **STSXL**

Thank you for purchasing a Sealey product. Manufactured to a high standard, this product will, if used according to these instructions, and properly maintained, give you years of trouble free performance.

**IMPORTANT:** PLEASE READ THESE INSTRUCTIONS CAREFULLY. NOTE THE SAFE OPERATIONAL REQUIREMENTS, WARNINGS & CAUTIONS. USE THE PRODUCT CORRECTLY AND WITH CARE FOR THE PURPOSE FOR WHICH IT IS INTENDED. FAILURE TO DO SO MAY CAUSE DAMAGE AND/OR PERSONAL INJURY AND WILL INVALIDATE THE WARRANTY. KEEP THESE INSTRUCTIONS SAFE FOR FUTURE USE.



Refer to  
instructions



Wear protective  
gloves during  
assembly



Wear eye  
protection during  
assembly



**WARNING!** This shelter is not designed to withstand high winds or severe weather conditions. Do not assemble, use, or leave unattended in windy conditions. If high wind speeds are forecast the shelter cover should be removed or the shelter should be dismantled to prevent damage or injury to avoid damage.

The manufacturer accepts no liability for damage caused by wind or improper use.

## 1. SAFETY

**NOTE:** this is a temporary structure and is not recommended as a permanent structure.

- ✓ This shelter is intended to offer protection from damages caused by the sun, light rain, light snow, tree sap, bird and animal excrement.
- ✗ **DO NOT** use the shelter to shield goods from high winds, heavy snow or ice storms. Only use it for its intended purpose.
- ✓ Choose the shelter's location carefully.
- ✓ Check for overhead utility lines, branches, etc.
- ✗ **DO NOT** install near roofs or structures that may shed snow, ice or excessive run-off.
- ✗ **DO NOT** install near electrical wires.
- ✓ Have an overview of all parts before attempting installation. Make sure all components are available.
- ✗ **DO NOT** use this product in environments for which it is not intended (i.e. extreme cold, high winds, extreme heat, heavy rainfall, etc).
- ✓ Always wear safety glasses when assembling this product.
- ✓ Wear gloves when working with tubing to prevent cuts or abrasions.
- ❑ **WARNING!** Anchors must be used with all shelters. **DO NOT** install the cover until the shelter is properly anchored to the ground.  
**NOTE:** proper anchoring and keeping the cover tight and free of snow and debris is the responsibility of the consumer. Damages caused by improper anchoring are not covered under warranty.
- ❑ **WARNING!** Keep all flame and heat sources away from the shelter. The fabric will burn if left in continuous contact with a flame.
- ✗ **DO NOT** use open flames or cooking or heating devices inside or in close proximity to the product, including all types of stoves, gas heaters, gas lanterns, citronella torches, mosquito coils, etc.
- ❑ **WARNING!** In order to reduce risk of burning and avoid damage:
  - ✗ **DO NOT** cook, smoke, refuel or use any open flame devices in or around the shelter.
  - ✗ **DO NOT** store flammable liquids (gasoline, kerosene, propane, etc.) in the shelter.
  - ✗ **DO NOT** operate gas powered equipment in or around the shelter.
  - ✗ **DO NOT** use hard-edged tools or instruments, such as rakes or shovels, to remove snow. These can cause punctures to the cover.
- ▲ **DANGER! DO NOT** start the engine of any vehicle or machine inside a closed shelter. Ensure that there is adequate ventilation for starting engines and for any work with paints, cleaners, etc.
- ✗ **DO NOT** use bleach, alkaline or harsh detergents for cleaning. Doing so will damage the material. Soap and warm water are recommended.

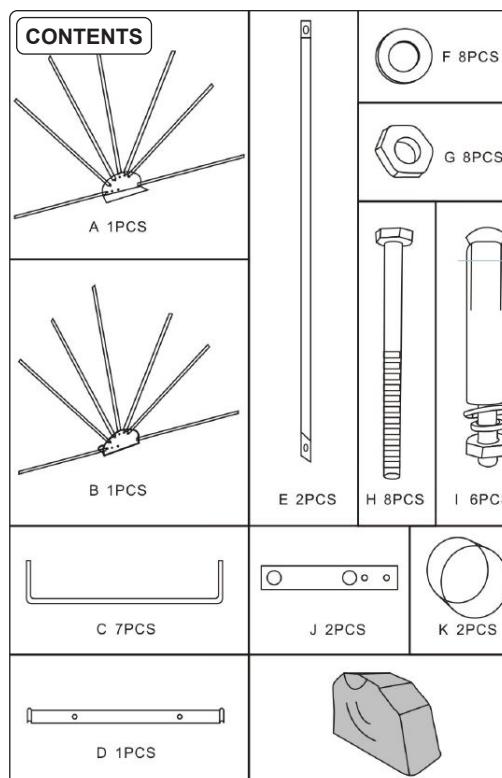
## 2. INTRODUCTION

Made from durable 600D Oxford PU coated anti-scratch material to protect vehicle's paintwork. Rigid powder coated tubular frame with hinged opening for easy-access. Side vents allows increased ventilation while still keeping vehicle protected from the elements. Includes anchor points for fixing shelter to driveway/ground (fixings included). Padlock hasp for increased security when canopy is closed (two combination locks included).

## 3. SPECIFICATION

Model No:.....**STSXL**  
Dimensions (L x W x H):.....3800 x 2100 x 1900mm

Nett Weight: ..... 28kg  
Size:.....XL

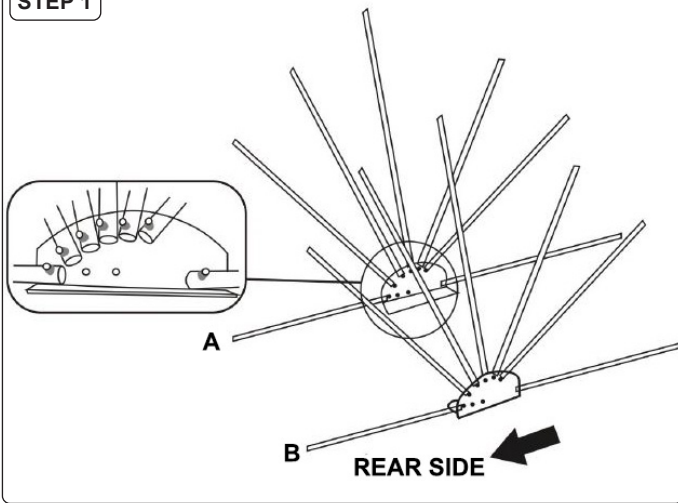


## 4. ASSEMBLY

Check all parts and fixings before assembling the shelter.

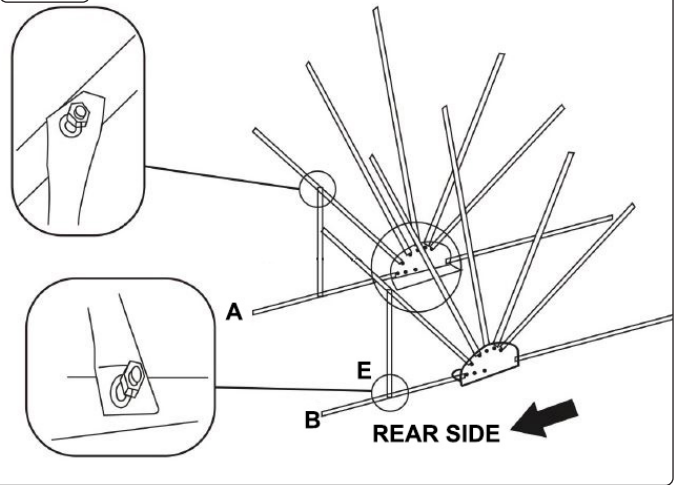
**IMPORTANT:** appropriate fixings must be used to secure the shelter. A heavy weight may be required on the support bar (D), in combination with suitable expansion screws.

### STEP 1



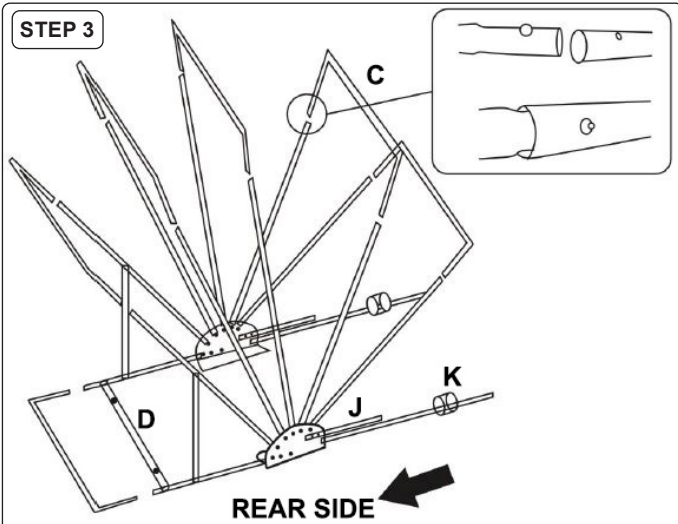
Position side frames (A) & (B) on the ground with the shortest tubes facing the front.

### STEP 2



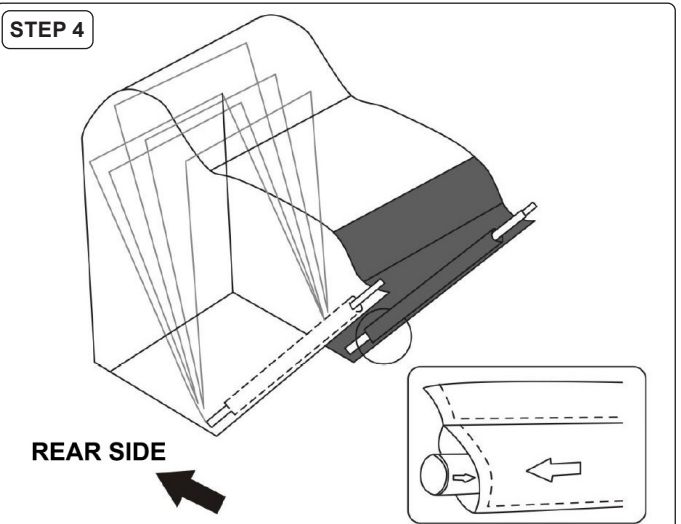
Attach supports (E) onto the side frames (A) & (B), using the fixings provided.

### STEP 3



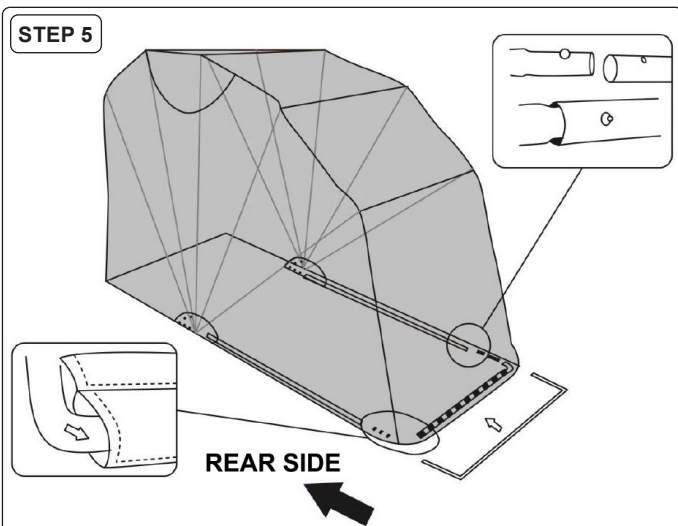
Connect angled bars (C) onto the side frames (A) & (B), leaving one angled bar (C) detached. Fix support bar (D) onto the side frames (A) & (B). Attach locking bar (J) onto the side frames (A) & (B) using the fixings provided. Slide rings (K) onto the frame. Leave in the unlocked position shown when assembling the shelter.

### STEP 4



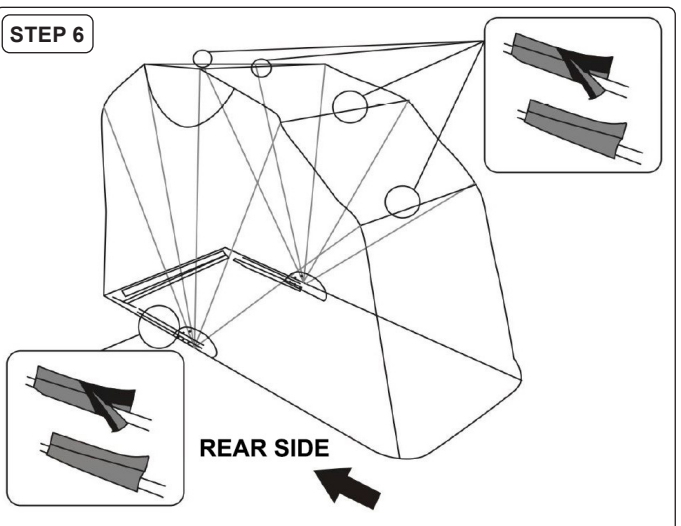
Fold the frame backwards, making sure the fabric covers the frame. Let the bottom unconnected tubes pass through the fabric sleeves.

### STEP 5



Pass the last angled bar (C) through the fabric sleeve and connect it to the side frames (A & B).

### STEP 6



Wrap the frame with the velcro sewn on the fabric cover at the locations shown.

## 5. MAINTENANCE

### 5.1. CLEANING

✓ Clean with soap and warm water.

✗ **DO NOT** use bleach, alkaline or harsh detergents for cleaning. Doing so will damage the material.

✗ **DO NOT** use hard-edged tools or instruments, such as rakes or shovels, to remove snow. These can cause punctures to the cover.

### 5.2. STORAGE

5.2.1. Remove the supports (E) to enable the cover to lay flat on the ground.

5.2.2. Tie all tubes together so the shelter can be moved for storage.



#### ENVIRONMENT PROTECTION

Recycle unwanted materials instead of disposing of them as waste. All tools, accessories and packaging should be sorted, taken to a recycling centre and disposed of in a manner which is compatible with the environment. When the product becomes completely unserviceable and requires disposal, drain any fluids (if applicable) into approved containers and dispose of the product and fluids according to local regulations.



REGISTER YOUR  
PURCHASE HERE

**Note:** It is our policy to continually improve products and as such we reserve the right to alter data, specifications and component parts without prior notice.

**Important:** No Liability is accepted for incorrect use of this product.

**Warranty:** Guarantee is 12 months from purchase date, proof of which is required for any claim.

**Jack Sealey Ltd t/a Sealey Group**, Kempson Way, Suffolk Business Park, Bury St Edmunds, Suffolk, IP32 7AR UK  
**Jack Sealey (EU) Ltd t/a Sealey Group**, Farney Street, Carrickmacross, Co. Monaghan, A81 PK68 Ireland  
**Tel:** 01284 757500 • **Email:** sales@sealey.co.uk • **Web:** www.sealey.co.uk